



# A LAZEE DAY

42' (12.80m) **BOSTON WHALER** 2018 420 Outrage  
Fort Lauderdale Florida United States



## OVERVIEW

**\$789,000**

Name:	A LAZEE DAY		
Model Year:	2018	Hull:	Fiberglass
Mfr:	<b>BOSTON WHALER</b>	Cruise Speed:	32
Engines:	4 Mercury	Max Speed:	45
Engine Model:	Verado 4 stroke	Cabins/Heads:	1 / 1
Engine HP:	350	Beam:	13' 0"
Fuel Type:	Gas/Petrol	Max Draft:	2' 6"



Jeff Stanley jeff@gilmanyachts.com

1-954-249-0360

## Data Sheet

Category: Center Consoles  
LOA: 42' 6" (12.95m)  
Model Year: 2018  
Build Year: 2017  
Hull Material: Fiberglass  
Hull Shape: Deep Vee  
Builder: Boston Whaler  
Naval Designer: Boston Whaler

Cabins: 1  
Heads: 1  
Beam: 13' (3.96m)  
Max Draft: 2' 6" (0.76m)  
Min Draft: 2' 4" (0.71m)  
Maximum Speed: 45 Cruise Speed: 32  
Range NM: 330

Fuel Type: Gas/Petrol  
Dry Weight: 29500 lbs  
SeaKeeper: Yes  
Fuel Tank: 600 gal  
(2271.25 liters)  
Fresh Water: 60 gal (227.12 liters)  
Holding Tank: 20 gal (75.71 liters)

## Engines

### Engine 1

Mercury  
Verado 4 stroke  
Outboard  
350HP  
Fuel: Gas/Petrol  
Hours: 452  
Hours Date: 08-22-2022  
Location: Port

### Engine 2

Mercury  
Verado 4 stroke  
Outboard  
350HP  
Fuel: Gas/Petrol  
Hours: 450  
Hours Date: 08-22-2022  
Location: Middle

### Engine 3

Mercury  
Verado 4 stroke  
Outboard  
350HP  
Fuel: Gas/Petrol  
Hours: 324  
Hours Date: 08-22-2022  
Location: Middle

### Engine 4

Mercury  
Verado 4 stroke  
Outboard  
350HP  
Fuel: Gas/Petrol  
Hours: 450  
Hours Date: 08-22-2022  
Location: Starboard

## Generators

### Generator 1

Fisher Panda  
Mini  
12KW  
Hours: 350  
Hours Date: 08/20/2022

## Walkthrough

### **Very desirable Seakeeper option!**

**A LAZEE DAY** is most easily entered via the walk through hinged portside boarding door into the Lower Cockpit Area. This area has full Cockpit bolsters, a fold down transom seat that folds out of the way for fishing, and a starboard side walk through transom door. Overhead this area can be protected by an electrically operated sliding sun shade. Two fish boxes are below deck.

The summer kitchen option has an electric grill, hot and cold sink, tackle center and an electric grill but still offers the center live well and starboard side refrigerator. A folding seat for three faces forward above, the hinged cover to the grill and sink.

Forward is the Helm Area with three helm seats just forward of the previously mentioned three person forward facing seat. The outboard two seats swivel to create a very unique seating group for a center console boat!

The Helm is optionally outfitted with three G Series 15" Raymarine touch screens and an array of push button LED switches for much of the equipment. Everything else can be operated from one of the touch screen Raymarine panels which is very high tech!

Going forward on either side of the helm are outboard storage cuddies and lockers with upholstered bolsters and blue under gunwale night lighting.

The Helm Area has a three side tempered glass enclosure with a large bow seat forward for three people to sunbathe or sit upright utilizing fold down armrests. The forward section of the sun berth lifts up to create backrest seating, perfect for using the hi-lo electrically adjustable teak table forward.

U-shaped seating is most forward around the table. Those seats too have flip up backrests as needed. All the way forward under a hinged cover is the anchor windlass with the all chain option. The stainless steel plow anchor is mounted under deck and deploys at the push of a button.

The Cabin is entered via the portside of the center console. Down three large curved steps to the wood cabin sole. There is storage outboard around a U shaped settee that can convert to sleep three to four people. A table in the center lowers to act as a berth filler. The Galley is to starboard. Next aft is an enclosed Head with an electric toilet and handheld shower with a sink.

A large glass panel in the overhead of the Cabin Area has a sunshade or full curtain to let in the desired amount of daylight.

The finishes, latches, hinges, etc. are all of a very high quality. Most all functions of the yacht both inside and out can be controlled by an iPad with a dedicated app for the 42' Whaler.

## Deck/Cockpit

- 10" Stainless steel cleats (stern cockpit with gunnel board hawse pipe (2), anchor locker (1)
- 10" Stainless steel pull-up cleats - bow (2), spring line
- (2) crosstie cleats at transom (2)
- 28" interior freeboard
- Acrylic transom door with stainless steel latch
- Anchor roller davit - stainless steel thru hull
- Retractable boarding ladder at transom
- Bow tow eye - heavy duty polished stainless steel

- Chrome Boston Whaler logo/model designator
- Drink holders – stainless steel (4 in bow, 2 in hawse pipes, 6 at helm, 2 at console lounge, 2 at leaning post)
- Full coaming bolsters
- Heavy-duty rub rail, white
- Lighting – LED courtesy lighting in cockpit (blue)
- Livewell – pressurized insulated (24 gallons) in aft port corner with clear lid, blue interior and red and white LED lights
- Molded fiberglass boarding/dive door port side with removable stainless steel dive ladder with dedicated storage
- Rails – cockpit toe rails – stainless steel
- Rails – hand rails; companion way, boarding ladders, prep station – welded stainless steel
- Rails – low profile interior bow rails – welded stainless steel
- (2) Trolling seats that fold out of outboard hullside - (1) port, (1) stbd
- Rod holders – gunnel mounted (bow (6), aft cockpit starboard (4), port (2))
- Rod holders – transom mounted (5)
- Rod holders – under gunnel (3)
- Self-bailing cockpit sole
- Ship's bell, chrome
- Under gunnel storage shelf with downrigger weight holders (2 per side)
- White rub rail and stainless steel insert
- Quick Windlass with 300' of chain with handheld remote control, stainless steel swivel and polished stainless steel anchor (44 lbs.)

## Helm Console

- A/C vents (2)
- Center helm layout
- 4" Ritchie magnetic compass
- Dash visor
- Drink holders (2)
- Electrical switch panel with stainless steel switches with illuminated text
- Electronics mounting surface with space for triple 15" displays
- Footrest – port side passenger fold-down footrest
- Footrest molded into console with fold-down standing platform and maintenance free, anti-fatigue synthetic surface
- Lockable acrylic sliding entry door with translucent skylight inset at the top of door for natural light
- Lockable glove box with 12-V receptacles and USB charging port
- Mercury DTS dual binnacle controls with integrated engine trim controls
- Mercury SmartCraft Vessel View 7" color LCD Display (network connections to Raymarine with Navigation Package)
- Rails – grab rail – stainless steel
- Steering wheel – cast stainless steel with knob and tilt helm
- Stereo – FUSION® full function remote control (FUSION® integration into Raymarine with Navigation Package)
- Switches – remote ignition key switches in cabin with pushbutton start/stop at helm
- Windshield defogger with remote shutoff control

## Windshield Hardtop System

- Custom powder coated frame integrated into the deck providing clean unobstructed walkways
- Electronics box with locking latch above helm
- Ladder access to hardtop integrated into hardtop frame, port & starboard sides
- Lighting – LED flood lights bow (1), cockpit (2)



- Lighting – LED navigation lights
- Lighting – LED overhead courtesy/chart light (red and white)
- Lighting – LED overhead lighting (blue)
- Full tempered side glass port & starboard
- Rod holders integrated onto hardtop supports (6)
- Sunshade for cockpit – telescoping polished stainless steel frame retracts and deploys electrically (black Sunbrella® canvas)
- Windshield – full tempered glass, full height with electric actuated center vent
- Windshield wipers – (1) stainless steel pantograph with wash-system

## Deluxe Leaning Post/Bait Prep Center

- 120V outlets (2)
- Bait prep area with cutting board
- Drink holders (2)
- Electric grill with hinged solid surface lid over grill providing counter surface when not in use
- Freshwater sink with hot and cold water
- Leaning post cushion on forward side of prep-station that also converts to a 3 person bench seat providing a second row of seating
- Lighting – LED task lighting
- Rail – grab rail – stainless steel
- Isotherm refrigerator/freezer – stainless steel drawer 12-V/120-V (2.3 cubic ft.) (port and starboard)
- Solid surface countertop
- Storage lid with tool holders, storage nets and leader holders
- Tackle storage drawers (3) (center)

## Seating Exterior

- Flip-up backrest at forward end of lounge providing wraparound seating
- Fold-away stern bench seat
- Forward console lounge with fold-down armrests, drink holders (4), backrests and removable cushions
- Forward port and starboard seats with folding backrests and drink holders (4) with stereo remote and 12-V receptacle on port side
- Helm and companion bolster style seats (3) with fold down armrests (center seat is electrically actuated) (port and starboard seats rotate to rear facing seat)
- Leaning post cushion on forward side of the prep station that also converts to 3 person bench seat providing a second row of seating behind the helm

## Storage Exterior

- Bilge storage aft
- Bow anchor locker with drains
- Coaming storage pockets with acrylic doors in port and starboard fore deck area (4)
- Coaming storage pockets with net retainers in port and starboard helm deck area (4)
- Forward lounge storage – miscellaneous gear, fender storage or optional dive tank storage
- Insulated built-in storage/cooler compartment at forward end of the console lounge
- Insulated in-floor fishboxes with drains, helm deck (2)
- Insulated in-floor storage/fishbox with drains, fore deck (2)
- Insulated in-floor storage/fishboxes with pump-out, cockpit (2)
- Lifejacket or weather curtain storage in overhead hardtop storage compartment
- Lighting – LED lighting in storage compartments

- Lockable electronics box in hardtop
- Lockable glove box
- Prep station side pockets (2)
- Prep station storage drawers
- Storage under bow seating

## Storage Interior

- Companionway hanging locker
- Galley – cabinet aft of microwave
- Galley – hinged lid integrated into countertop providing access to storage compartment
- Galley – pull-out waste receptacle and dish storage
- Head cabinetry
- Storage under interior seating

## Cabin Interior

- 120V receptacle – port side
- 12V USB charging ports – port and starboard sides
- 24” Jensen flat screen HDTV
- Cruisair Air conditioner (12,000 BTU)
- Carbon monoxide detector
- Central vacuum system with hose and attachments with dedicated storage
- Console side windows with (2) opening port lights with shades
- Convertible double berth with filler cushion; comes with fitted sheet, comforter and two regular size pillowcases
- Convertible pull-out settee
- Digital vessel control; iPad with inductive charging case, CZone App (monitor vessel systems and control DC circuits)
- Easy to clean interior materials
- Elite interior color package
- Hanging locker
- Hardwood cabin sole
- Hull side windows with shades
- Lighting – LED diffused courtesy lights (blue)
- Lighting – LED diffused overhead lights (white)
- Lighting – LED reading lights (2)
- Rod storage (4)
- Skylight with integrated shade system
- Fusion AV755 stereo includes the following: (FUSION® integration into
- Raymarine with Navigation Package)
- FUSION® stereo DVD/CD/AMFM/VHF, USB AUX input
- iPod / iPhone / Android compatible via integrated Bluetooth
- Sirius XM option ready
- Stereo remote controls – helm and bow
- MP3/Aux input
- JL Audio waterproof speakers – exterior, 7.7” aft cockpit
- (2), helm deck (4), bow (2), 10” sub-woofer, helm deck (2)
- JL Audio amplifiers (2)
- JL Audio speakers – interior, 6.5” cabin (4)
- Table – wood table that lowers to support filler cushion for forward double berth
- Throw pillows (3)

## Galley

- 120V receptacle
- 12V receptacle
- Dedicated dish storage in pull-out drawer below sink and in a cabinet above the sink
- Muave' microwave
- Pull-out waste receptacle
- Rail - hand rail - stainless steel
- Isotherm refrigerator/freezer - stainless steel 12V / 120-V (1.7 cubic ft)
- Sink filler - solid surface matching countertop with integral cutting board
- Sink with faucet and solid surface countertop

## Enclosed Head Compartment

- Accent wall
- Electric Vacu-Flush® toilet, holding tank with vent filter, overboard discharge, dockside pump-out and tank level indicator
- Enclosed shower - rain shower head with hot and cold faucet and shower curtain providing protection of vanity area
- Flooring - solid surface tile
- Lighting - LED overhead light
- Mirror
- Opening port light
- Rail - hand rail - stainless steel
- Shower sump
- Solid surface pull-out countertop forward of vanity
- Toilet paper holder
- Vanity storage
- Vanity with sink, polished chrome faucet and backlit mirror

## Notable Options and Accessories Aboard

- 350 DTS quad (white) Mercury Verado four stroke engines with Joystick Piloting; outboard docking system with joystick, electronic steering, skyhook/autopilot keypad and functionality
- Seakeeper 5 gyro stabilizer
- (6) person Revere canister life raft on hardtop
- ACR EPIRB on hardtop
- Anchor windlass all chain (300')
- Audio package - premium:
- Additional JL Audio waterproof speakers - exterior 7.7" helm deck (2), 8.8" bow (2), 8" sub-woofer bow (1)
- Additional JL Audio speakers - interior 8" subwoofer
- Additional JL Audio amplifiers (2)
- Boston Whaler dishware set with dedicated storage
- Bow tow eye - secondary tow eye, in addition to standard towing eye for use of 2 tow bridles
- Fishbox - with freezer plates, port and starboard
- Full height tempered side glass integrated with hardtop frame
- Lighting - LED underwater blue lights (6), transom mounted (3), hull bottom mounted (3)
- Outriggers - radial outriggers (hardtop mounted), Taco Grand Slam
- Table - Teak bow table (electrically raised and lowered) with filler cushion and canvas cover
- GOST Global Tracking System-not currently subscribed to

## Mechanical

- 350 DTS quad Mercury® Verado Four Stroke engines
- ACR spotlight (premium)
- Advanced battery management system; in cabin electric switches and charging relays with remote paralleling
- Cruisair air conditioner (cabin) (12,000 BTU) reverse cycle
- Cruisair air conditioner (helm deck) (12,000 BTU) reverse cycle
- ProNautic battery chargers (2)
- Battery trays (7)
- Bilge pump – high water bilge pump with alarm (2,000 GPH)
- Bilge pumps – automatic (1,100 GPH forward, 2,000 GPH aft)
- Bonding system for underwater through hull fittings
- Dockside cable TV inlet
- Dual 30-amp shore power inlets with battery chargers, isolation transformers and (2) 50' Shore power cords
- Electric dual trumpet horn
- Lenco electric trim tabs with indicator (auto glide, dynamic running surface, dual ram)
- (4) Engine fuel / water separators
- Freshwater anchor washdown with integrated coiled hose system
- Freshwater hot and cold water system with dockside
- hookup and tank level indicator integrated into VesselView
- Freshwater pull-out hot and cold transom shower
- Freshwater system with 60-gallon tank
- Freshwater washdown hot and cold retractable hose reel at mid-ship
- Fuel tanks – dual 300-gallon aluminum fuel tanks
- Fisher Panda 12kw mini generator – 120-V 60 Hz with fire suppression system, automatic with manual override
- Generator hours 350 (8/20/22)
- Lighting – LED cockpit and machinery space lighting
- Manifold plumbing system with individual valve per circuit
- Raw-water washdown with retractable hose reel at midship
- Stainless steel propellers
- Thru hulls – cast bronze thru hulls (below waterline)
- Thru hulls – cast stainless steel thru hulls (above waterline)
- Water heater

## Electronics

- 15' Raymarine gS165 Electronics/Dual Navigation Package – GPS, radar, CZone, depth
- 1000 watt thru hull transducer
- Raymarine gS165, 15.4" screen (additional display)
- Dash surface custom black acrylic integrated with switch panels and flush mounting gS displays
- CHIRP DownVision Sonar
- Raymarine CP100 Sonar
- CPT100 Transom Mount Transducer
- Radar – Open Array
- Raymarine 4kW High Definition Digital Radar with 48" – 72 mile
- Open Array Antenna
- Raymarine Thermal Night Vision
- Whaler Anti Theft System with special fob

## Hardtop Canvas Enclosure



- Hardtop aft enclosure curtains (white)
- Hardtop wing curtains (white)

## Canvas Cover Package

- Black Sunbrella
- Cockpit fold-out stern seat backrest cover
- Console cover
- Forward lounge cover
- Forward seat cushion cover
- Helm seat cover
- Prep station / leaning post cover

## Remarks

**A LAZEE DAY** is a very nice example of the ever popular 42' Boston Whaler. she has only 450 hours and engine warranties to approximately November 2023. Loaded with all the options, she is clean, ready to go and very seriously for sale. Easy to see in Ft. Lauderdale.

## Exclusions

While every effort was made to list all pertinent included equipment aboard **A LAZEE DAY**, there are some personal belongings aboard. Prospective purchasers should assume any item not specifically mentioned herein will not convey at closing.

## Disclaimer

The company offers the details of this vessel in good faith but cannot guarantee or warrant the accuracy of this information nor warrant the condition of the vessel. A buyer should instruct his agents, or his surveyors, to investigate such details as the buyer desires validated. This vessel is offered subject to prior sale, price change or withdrawal without notice.



A LAZEE DAY



Bow Area





Windlass Detail



Folding Backrests



Below Deck Storage



Bow Lounge





Storage Below Bow Lounge



Backrest for Bow Lounge





Spacious Side Decks



Trolling Seats



Helm



Helm





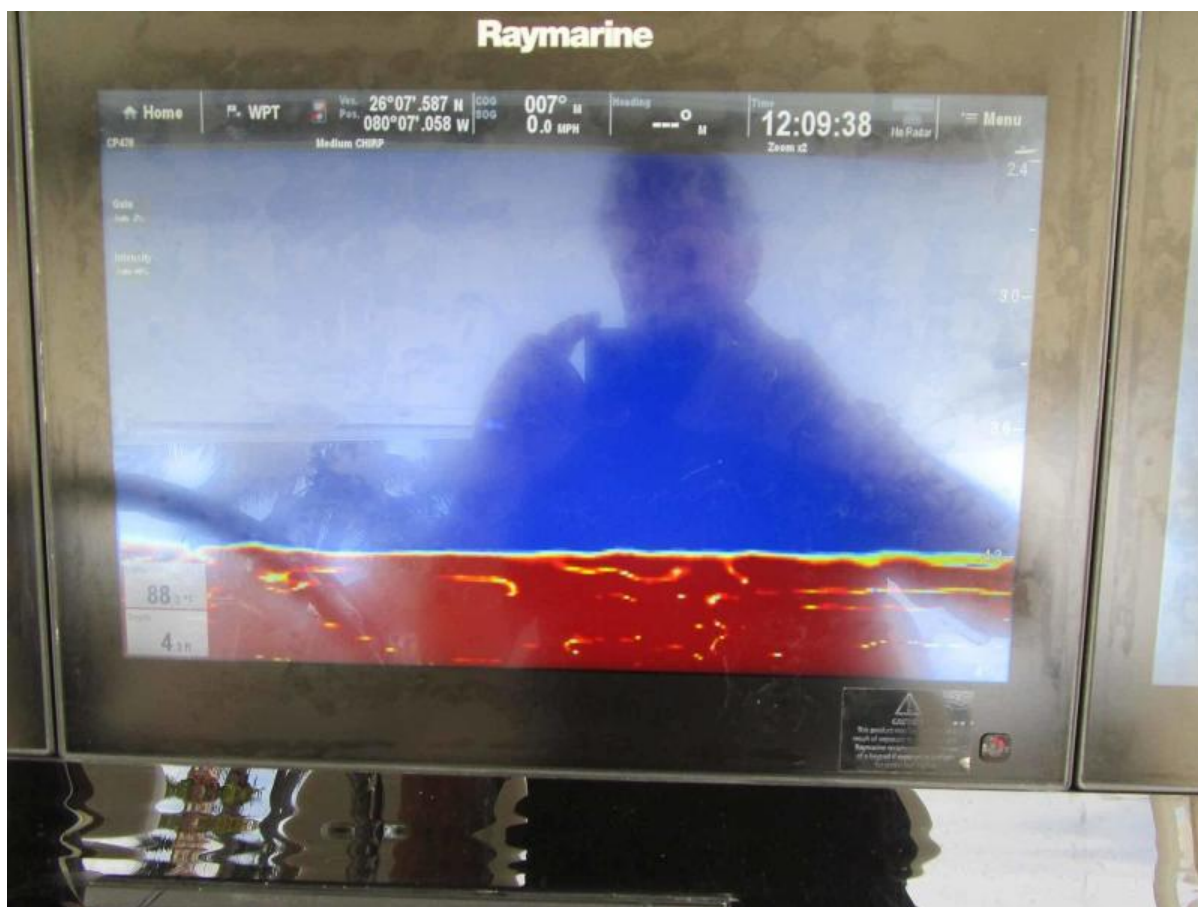
Helm Overhead



Seakeeper Controls



MFD as Plotter



MFD as Fishfinder





MFD as CZone Control



Push to Start





Joystick with Skyhook



Helm Seats



Leaning Function



Helm Step





Engine Hours



Hardtop Equipment



Second Row Seating



Second Row Seating A/C





Summer Kitchen



Grill, Sink, etc.





Stainless Steel Fridge



Retractable Awning



Cabin Looking Forward



Table Up Position





Cabin Looking aft



Overhead Dead Light



Galley



Microwave



Head





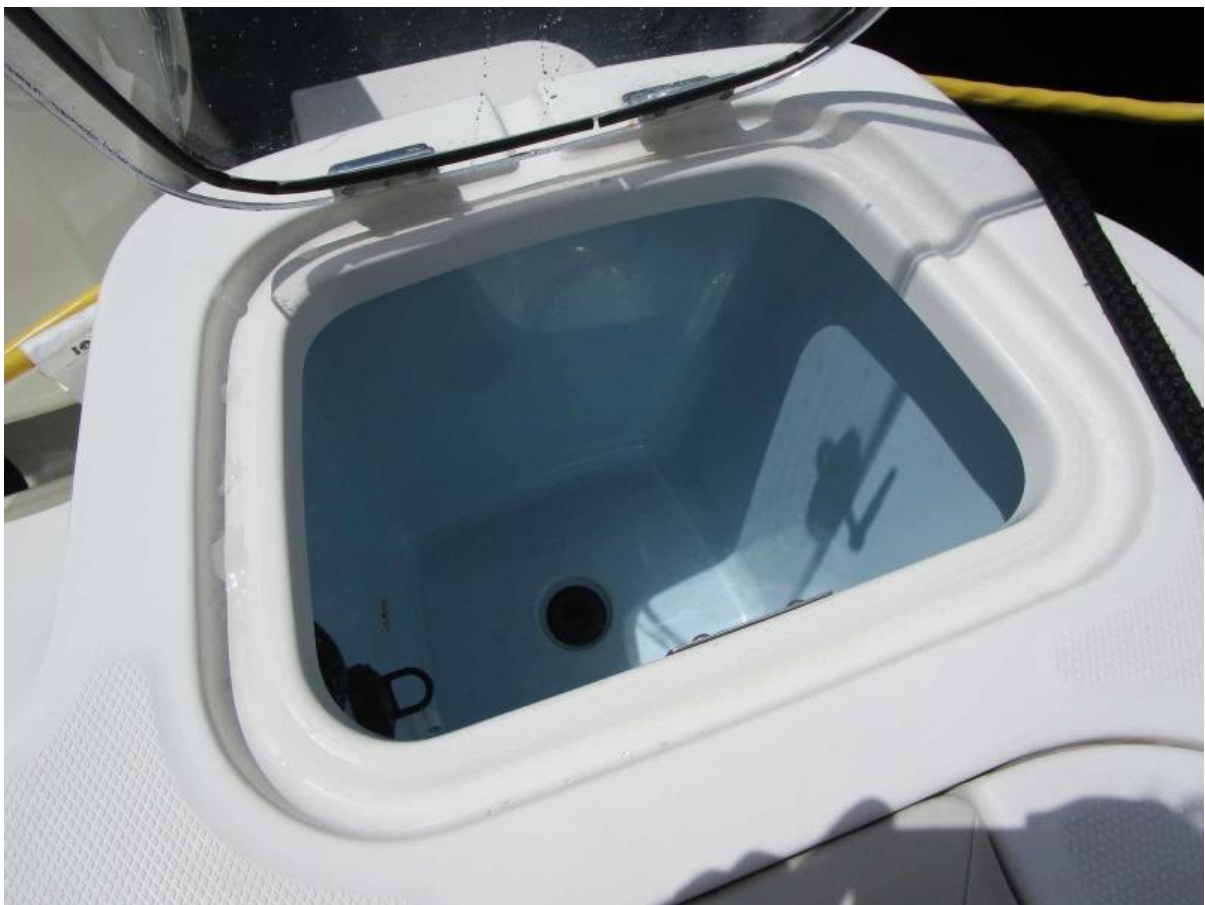
Electrical Panel



Portside Door



Transom Area



Livewell





Aft Seat Up



Aft Seat





Hot and Cold Shower



Aft Transom Door



Fwd Bow Covers





Fwd Bow Table and Seat Covers



Mechanical Area





12kw Generator



Seakeeper Gyro



Stbd Side of Mechanical Area



Portside of Mechanical Area





Transom



tern Shot





Alternate Profile